
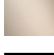



36 514 979



- AQUAPRESSURE FLOW, Durchfluss max. 10 l/min (bei 3 Bar)
- Strahl verstellbar
- Abdeckplatte 120 x 60 mm
- Anschluss 1/2"

Passt zu: IMO, LULU, MADISON, MEM, TARA, CL.1, LISSÉ, VAIA, META, CYO

|   |                                 |               |
|---|---------------------------------|---------------|
|    | Chrom                           | 36 514 979-00 |
|    | Platin gebürstet                | 36 514 979-06 |
|    | Platin                          | 36 514 979-08 |
|    | Dark Chrome                     | 36 514 979-19 |
|    | Light Gold                      | 36 514 979-26 |
|    | Light Gold gebürstet            | 36 514 979-27 |
|    | Messing gebürstet (23kt Gold)   | 36 514 979-28 |
|    | Schwarz matt                    | 36 514 979-33 |
|    | Bronze gebürstet                | 36 514 979-42 |
|   | Champagne gebürstet (22kt Gold) | 36 514 979-46 |
|  | Champagne (22kt Gold)           | 36 514 979-47 |
|  | Chrom gebürstet                 | 36 514 979-93 |
|  | Dark Platin gebürstet           | 36 514 979-99 |

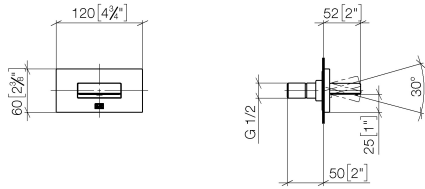
**Empfohlenes Zubehör**

- UP-Wandwinkel -** 35 085 970 90
- Max. Einbautiefe 163 mm
  - Min. Einbautiefe 90 mm

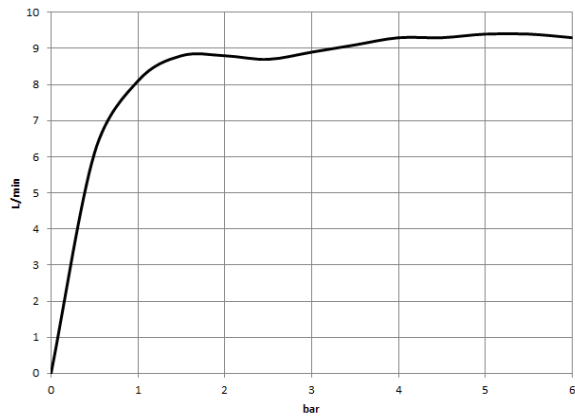


36 514 979

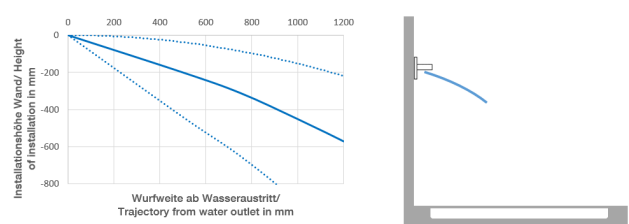
mm [inches]



**Durchflussdiagramm**



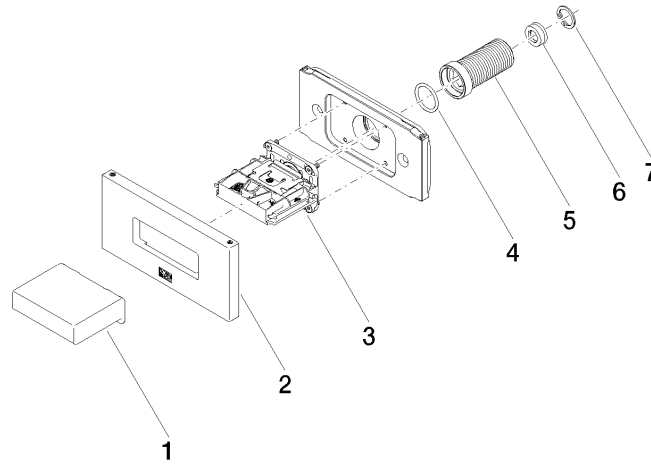
**Wurfweitendiagramm**



**Zertifikate**

WRAS\_2005004. LGA\_29336.

36 514 979



### Ersatzteilstückliste

| Nr. | Artikelnummer      | Benennung           | Verbaumenge | Lieferzeit |
|-----|--------------------|---------------------|-------------|------------|
| 1   | 09 17 01 230-00    | Gehäuse             | 1           | 10         |
| 2   | 90 27 97 041 00-00 | Rosette             | 1           | 10         |
| 3   | 90 29 03 088 00 90 | Einsatz             | 1           | 2          |
| 4   | 90 14 10 010 00 90 | Dichtung            | 1           | 2          |
| 5   | 09 24 04 336 90    | Nippel              | 1           | 2          |
| 6   | 09 23 01 134 90    | Durchflussbegrenzer | 1           | 2          |
| 7   | 09 16 01 014 90    | Ring                | 1           | 2          |